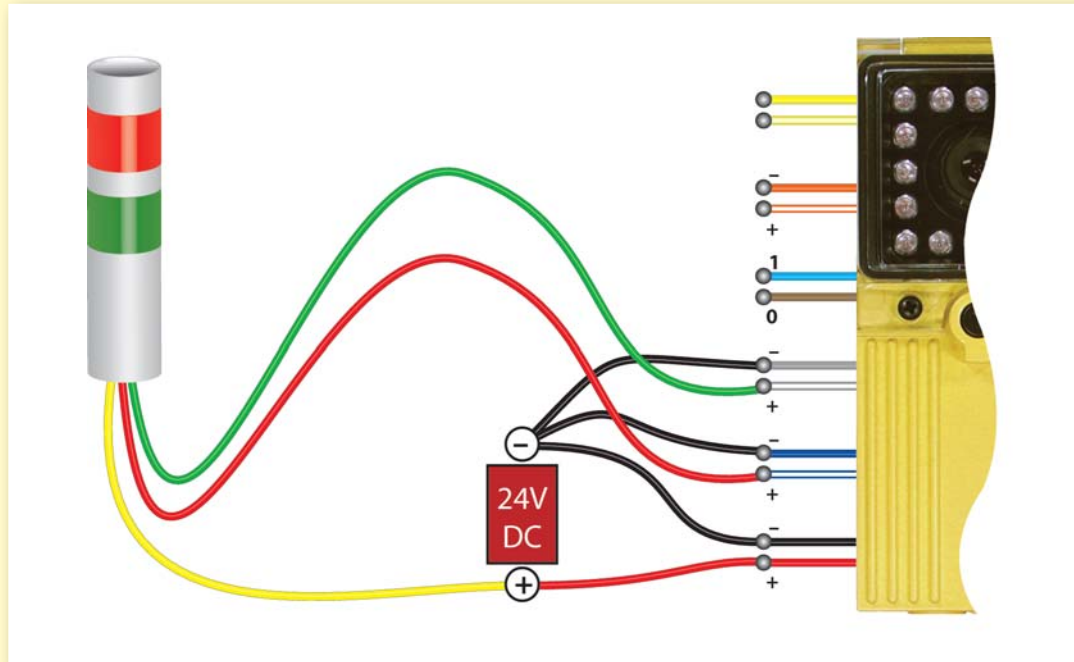


# ✓ Checker® 接线说明



## 用 Checker 感应器控制设备

将 Checker 输出连接到换向器

2

将 Checker 输出连接到 LED

3

将 Checker 输出连接到竖排灯

4

将 Checker 输出连接到 PLC 输入

5

用 Checker 输出触发 In-Sight® 感应器

6

## 控制 Checker 作业选择

用指轮开关与按钮选择作业

7

用 PLC 选择作业

8

## 重新训练 Checker 感应器

用瞬时开关重新训练感应器

9

用 PLC 重新训练感应器

10

## 触发 Checker 感应器

从按钮触发 Checker 感应器

11

从光感应器触发 Checker 感应器

12

从 PLC 触发 Checker 感应器

13

## 配合编码器使用 Checker 感应器 (仅限 Checker 101E)

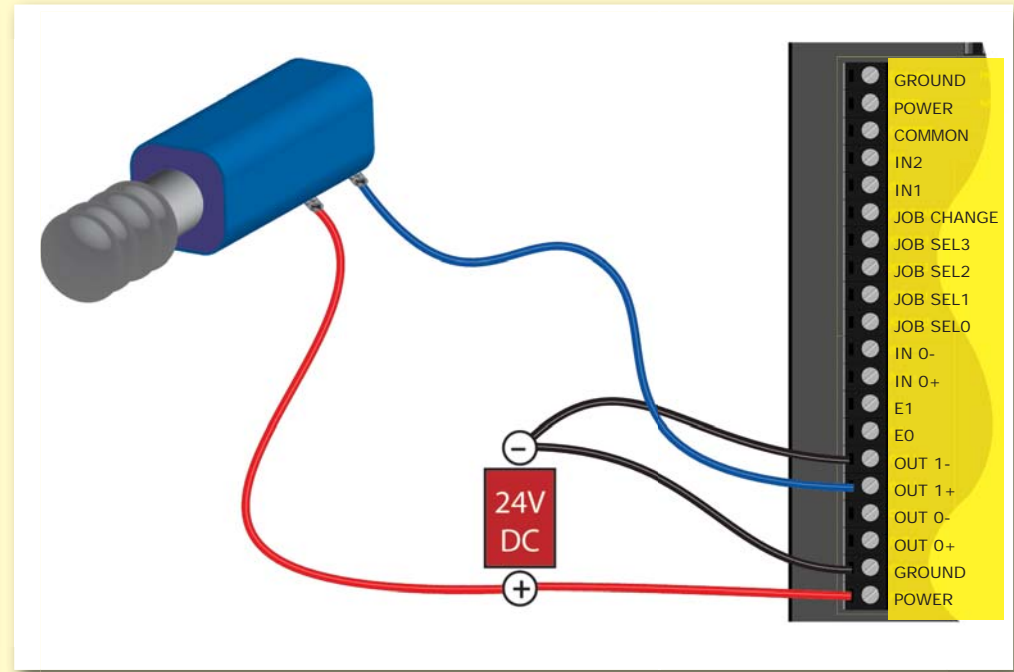
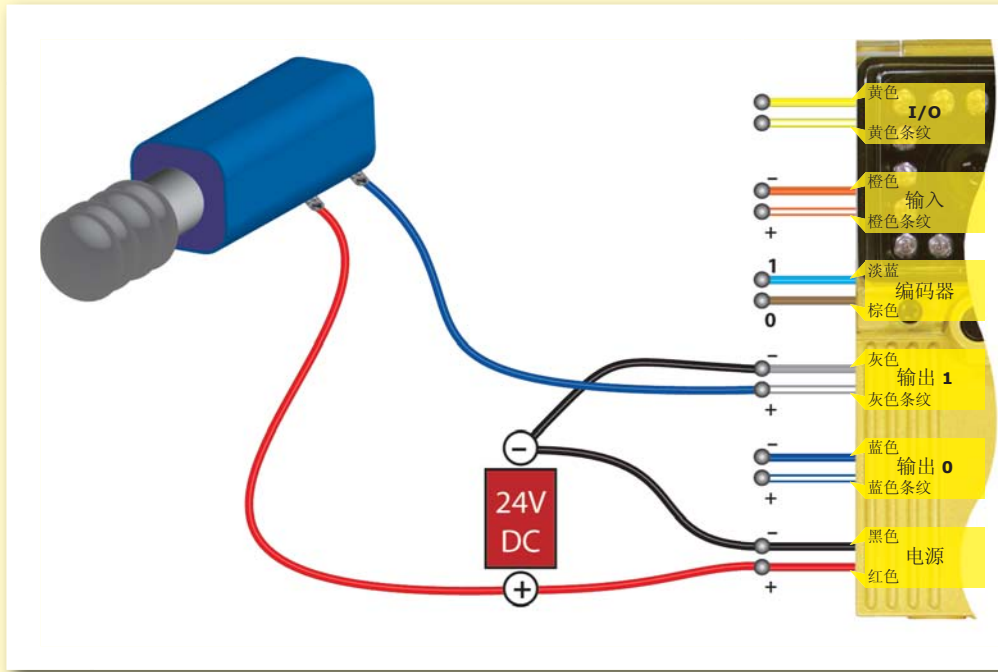
连接开路集电极编码器 (101E)

14

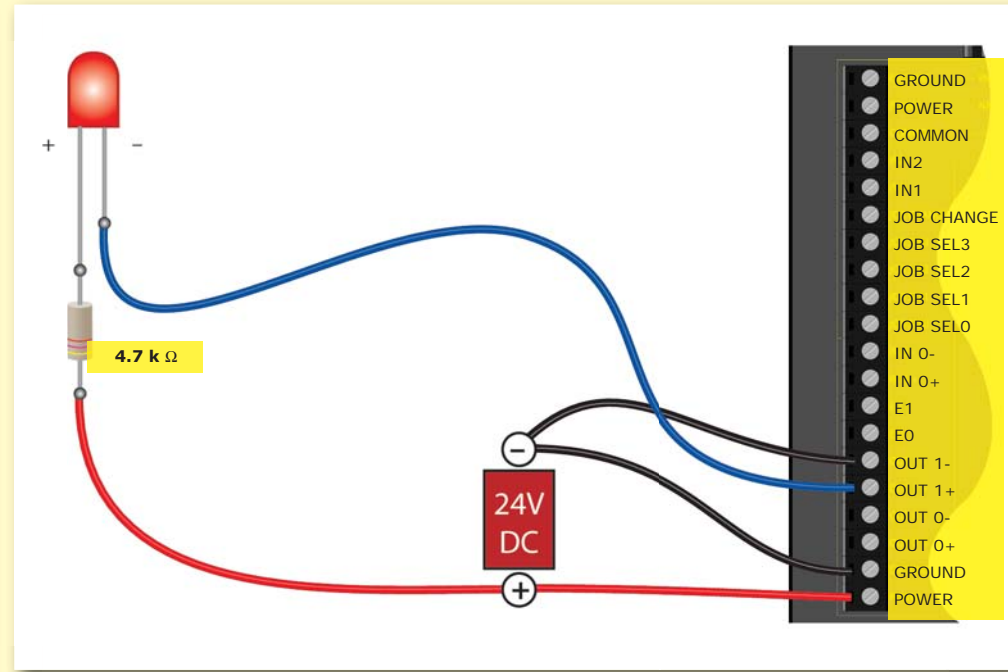
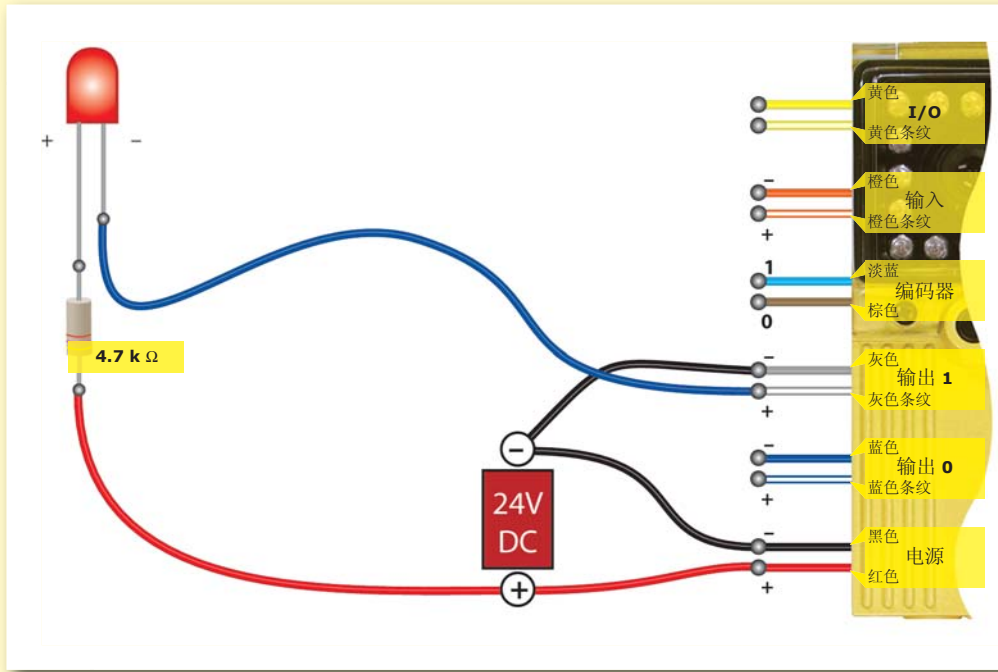
连接线驱动编码器 (101E)

15

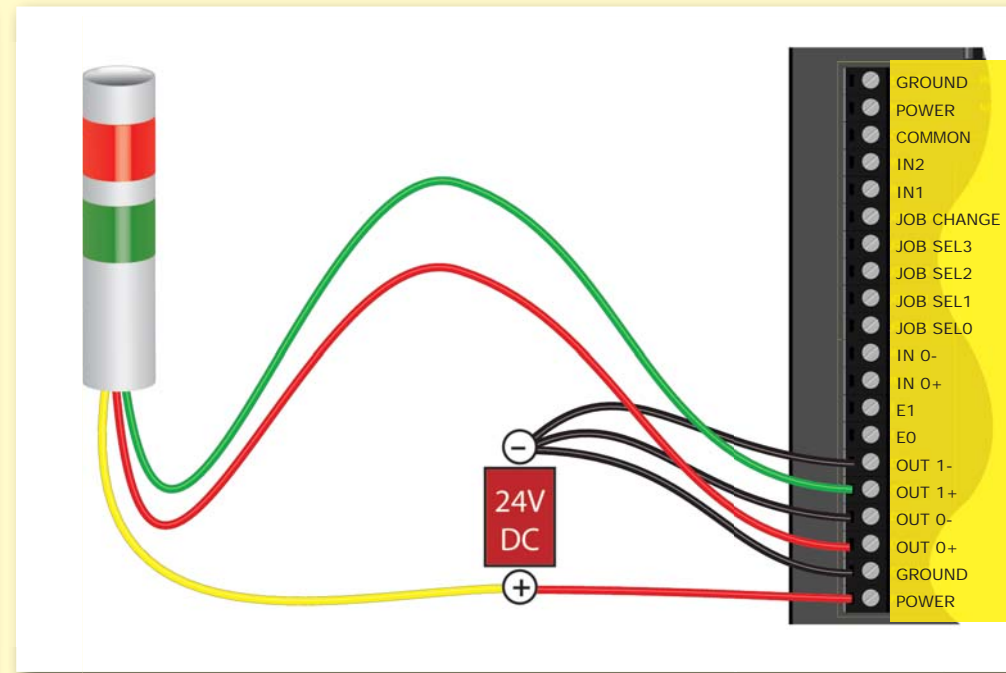
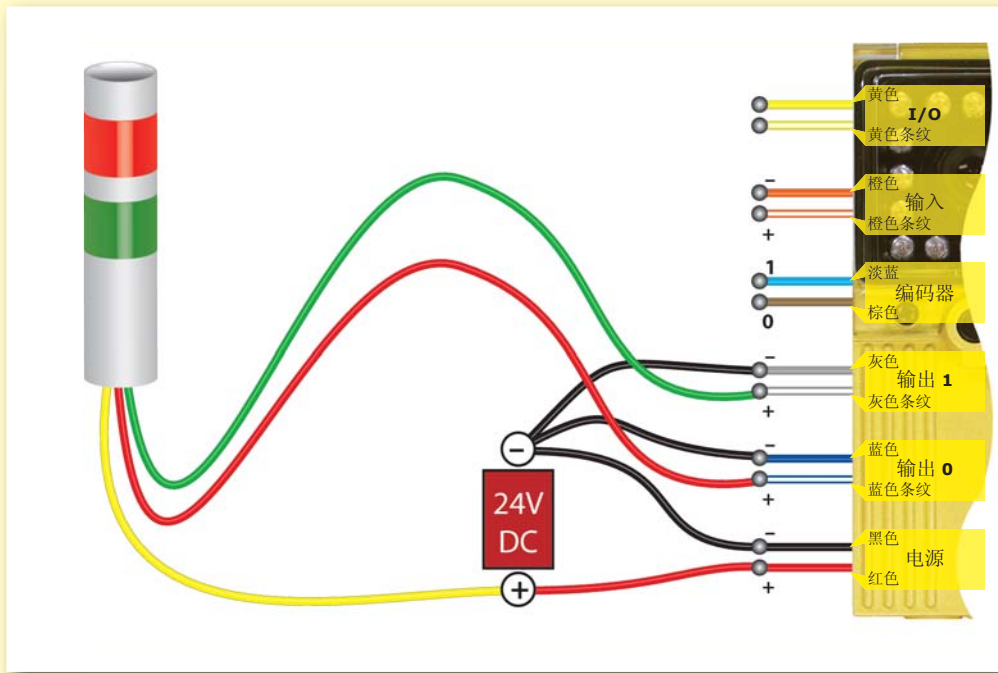
# 将 Checker 输出连接到换向器



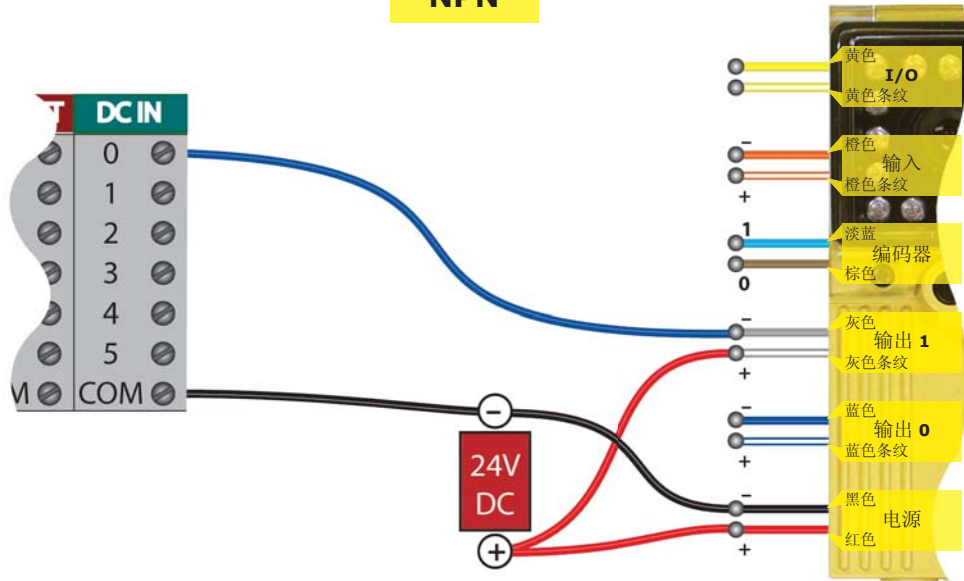
# 将 Checker 输出连接到 LED



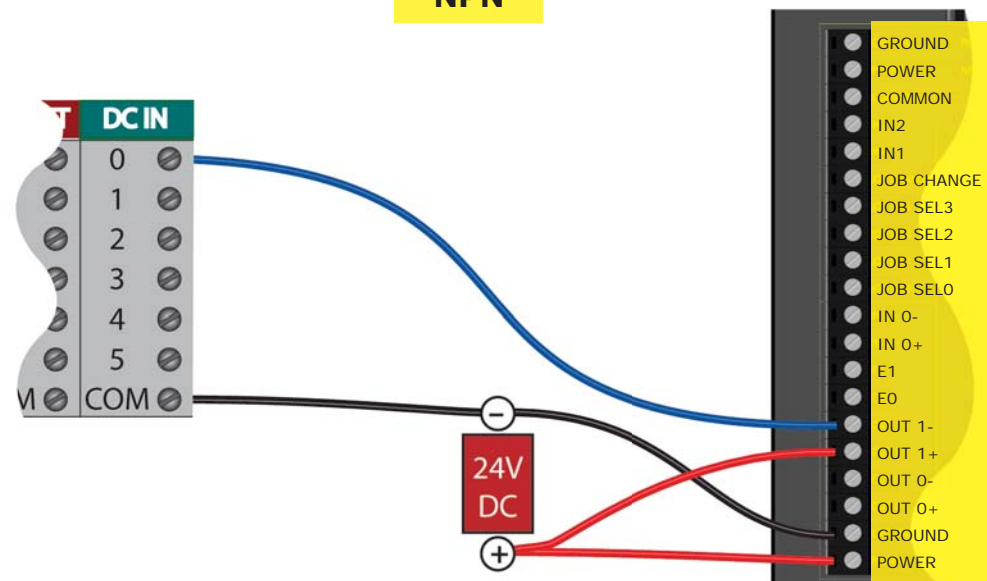
# 将 Checker 输出连接到竖排灯



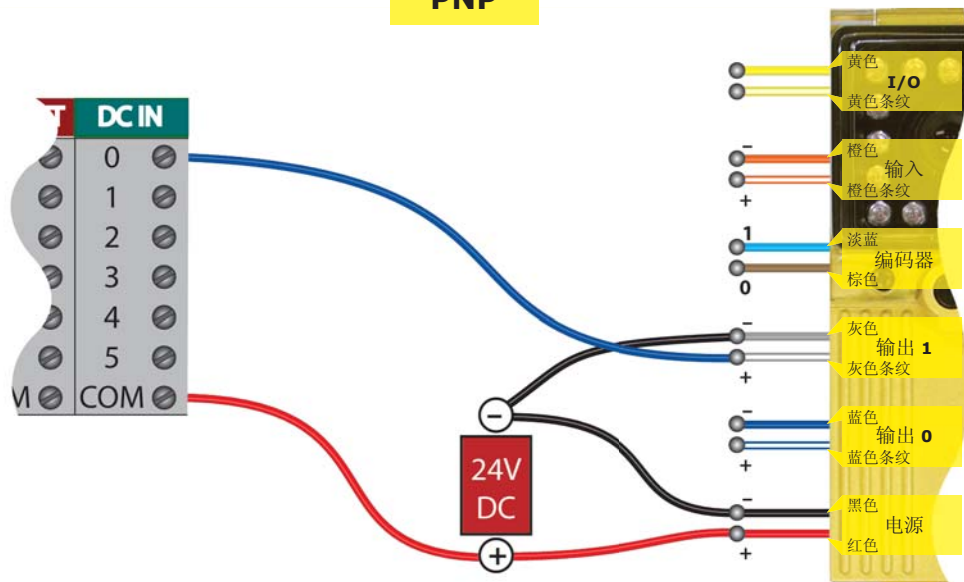
**NPN**



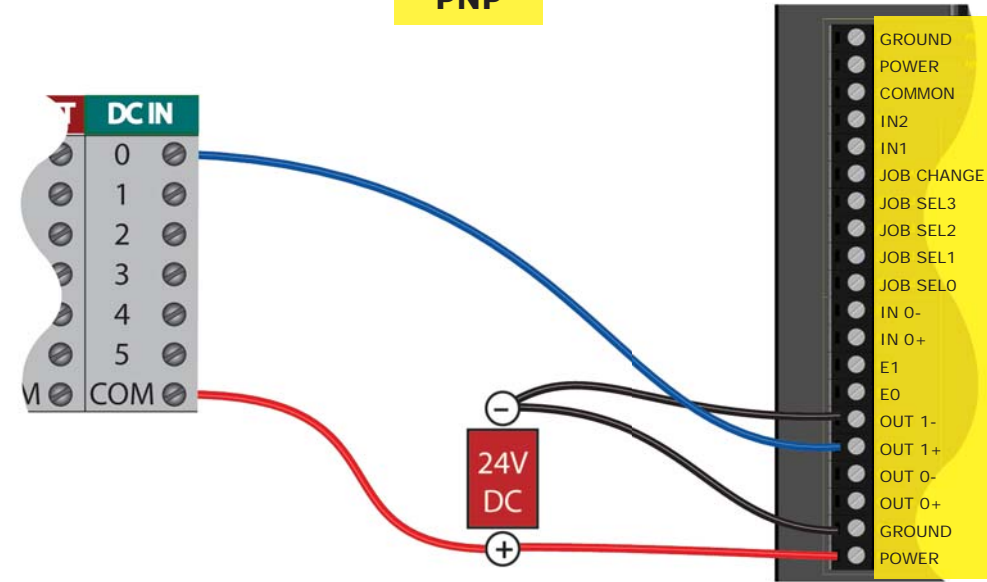
**NPN**

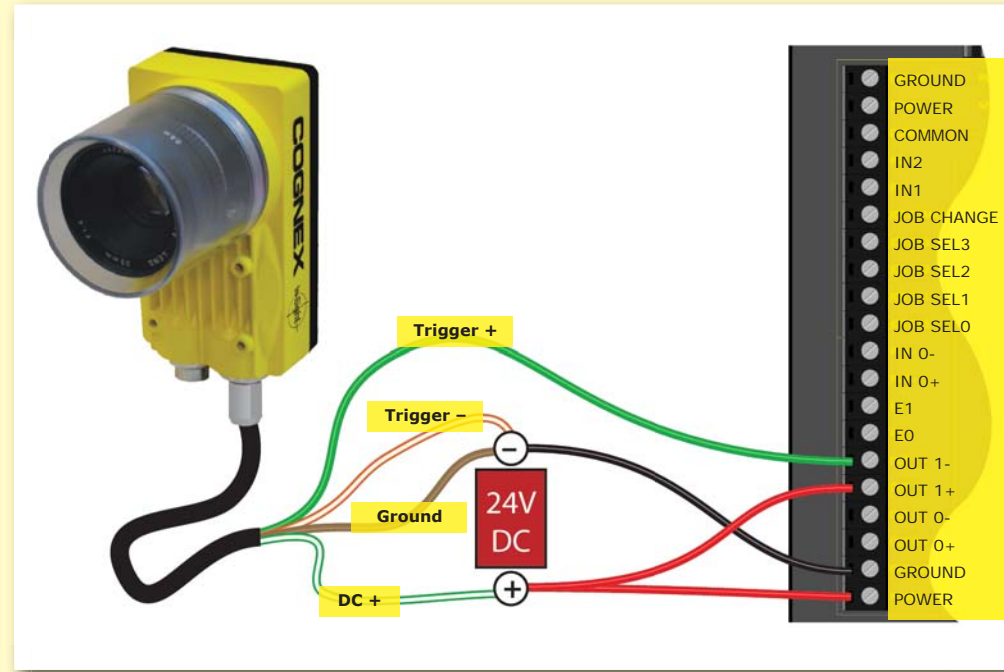
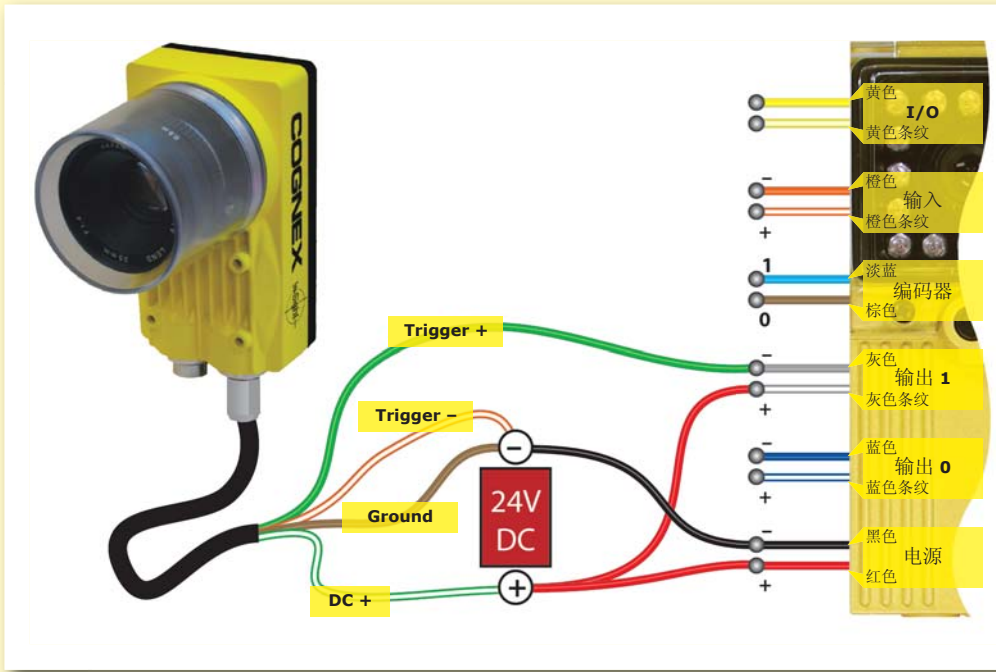


**PNP**

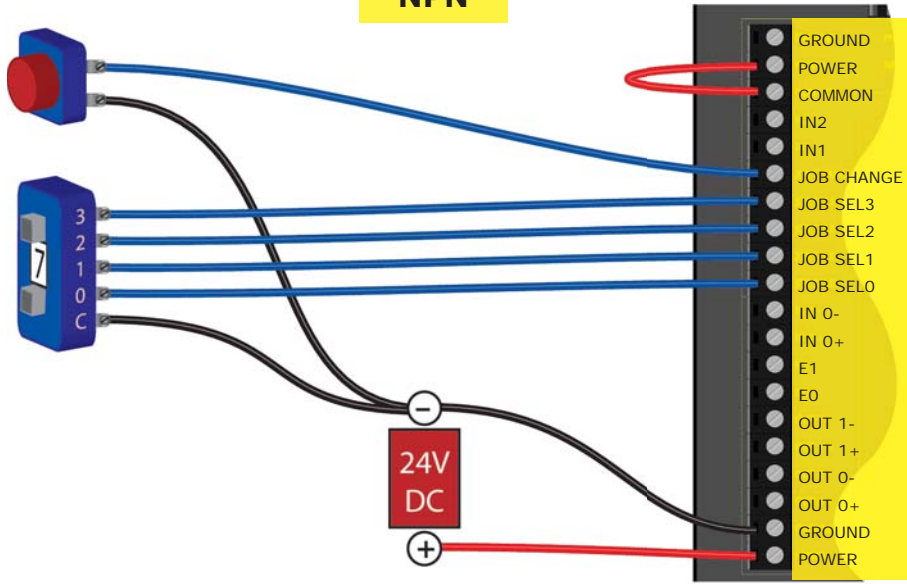


**PNP**

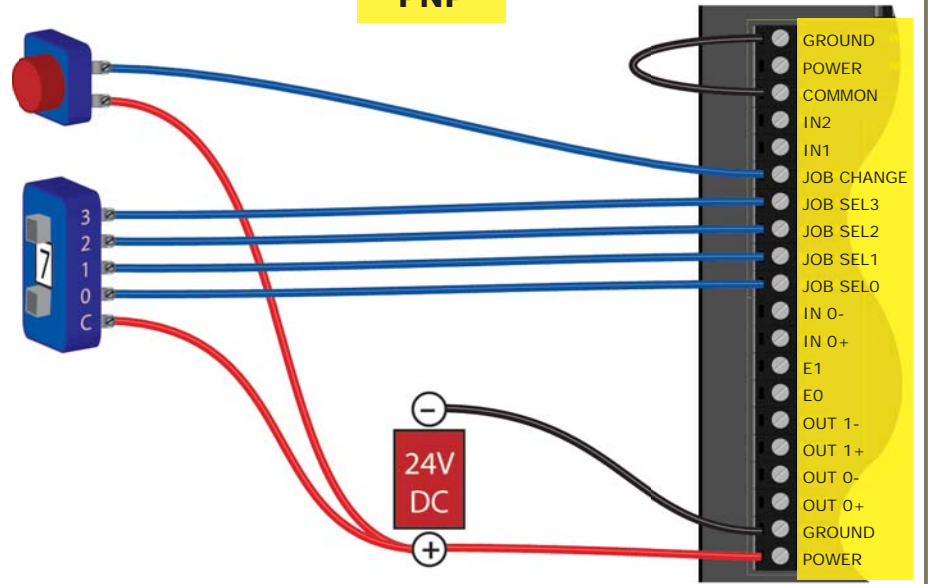


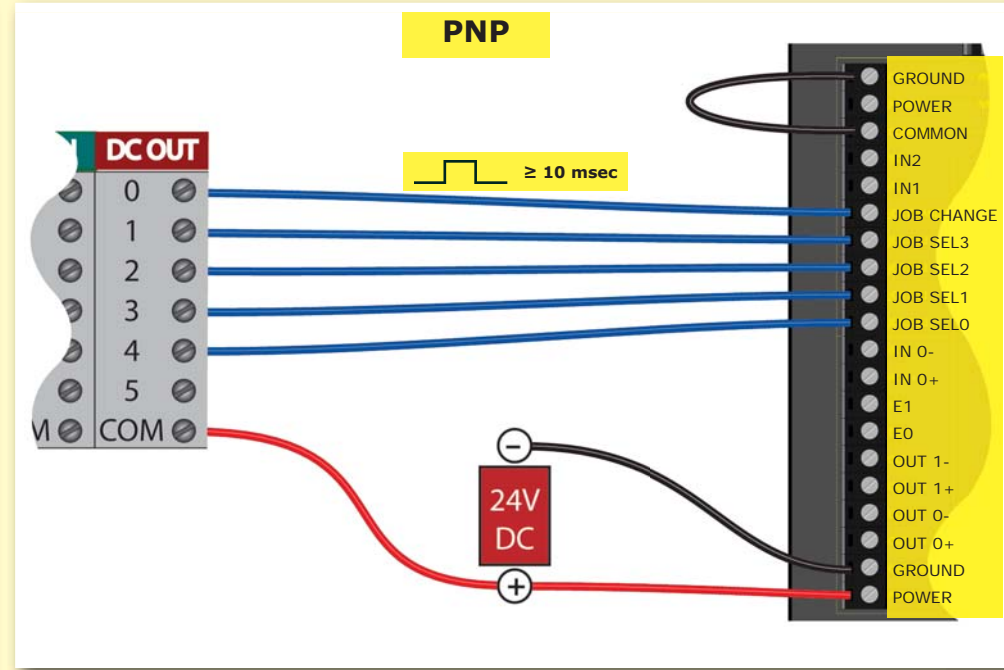
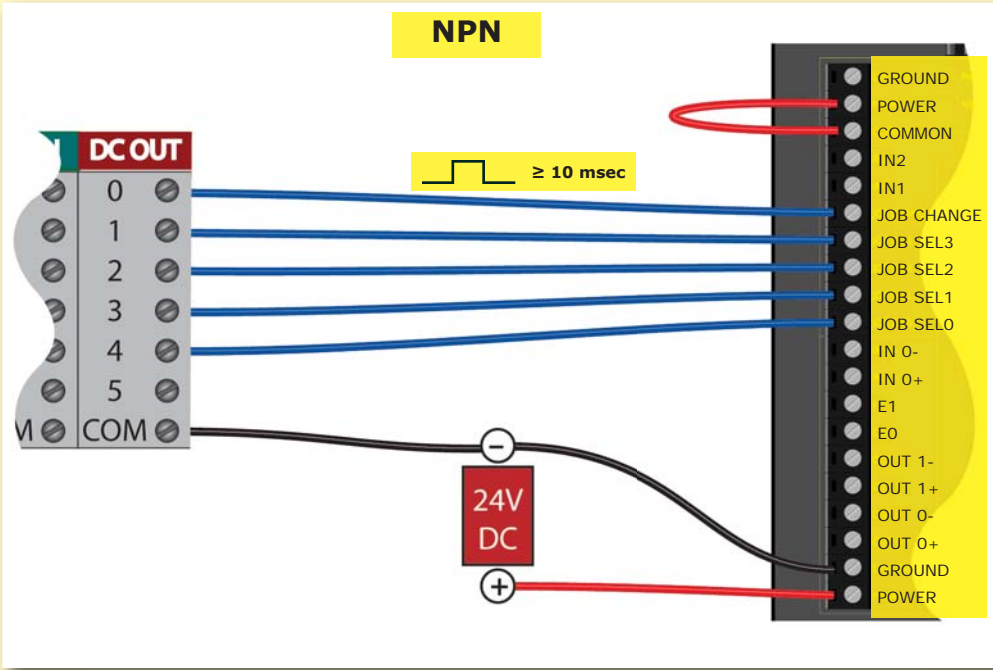


### NPN

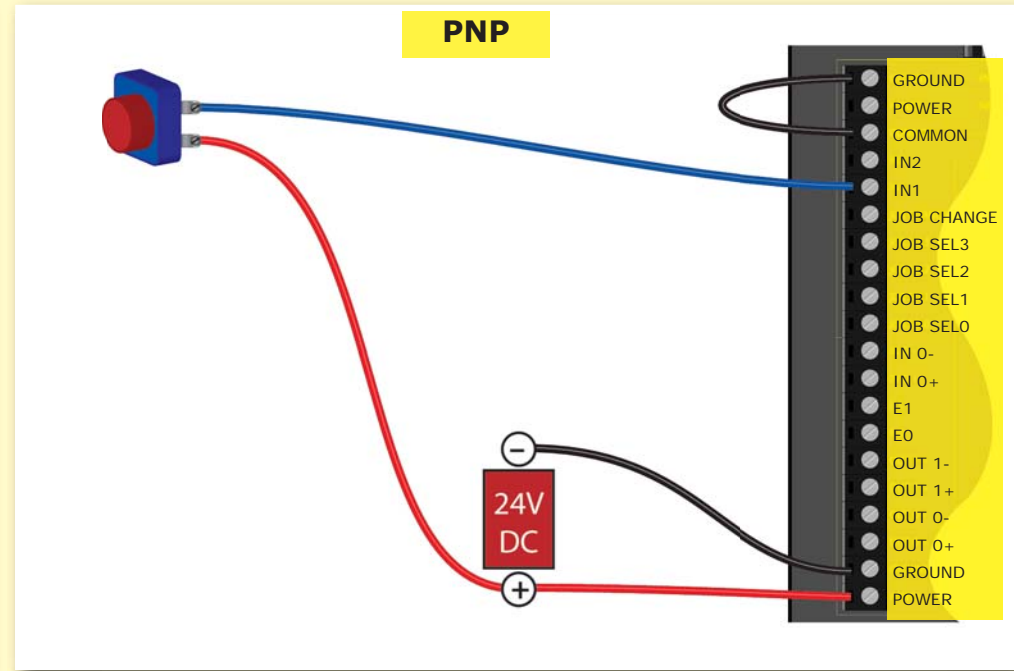
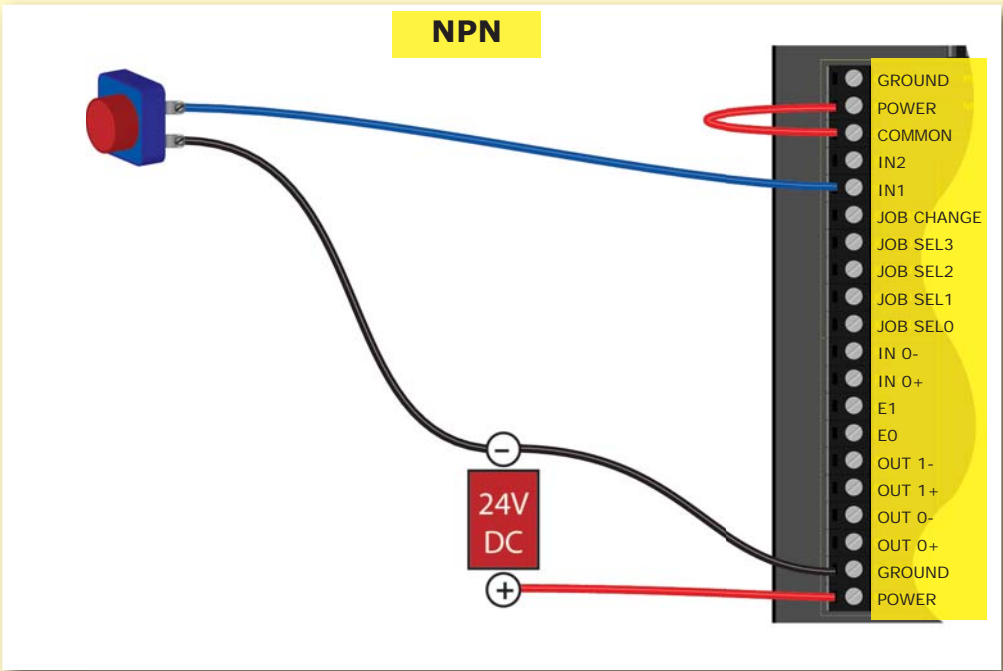


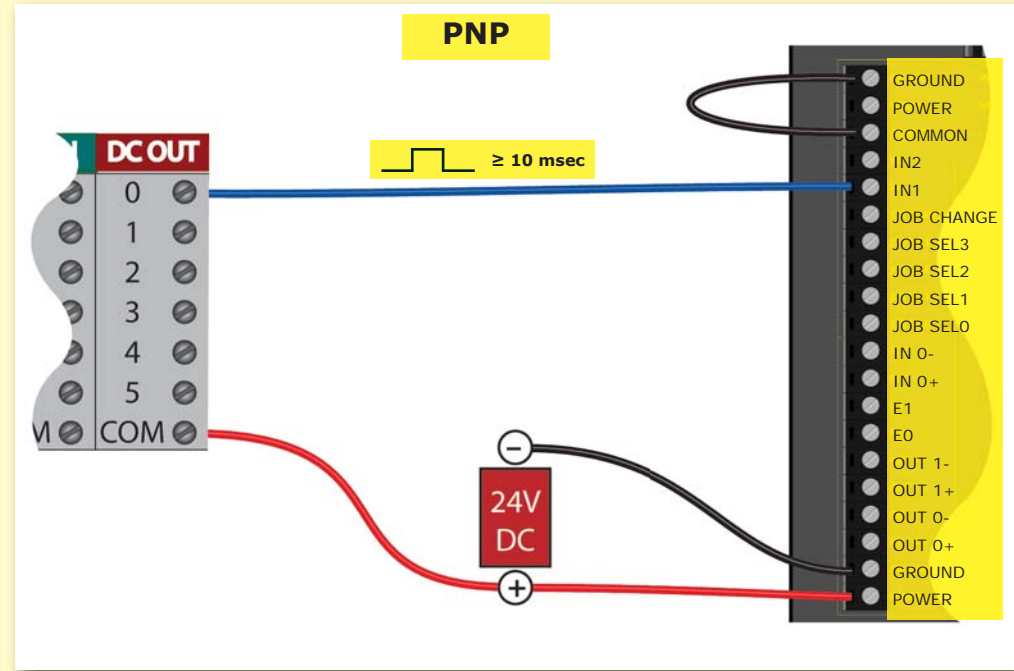
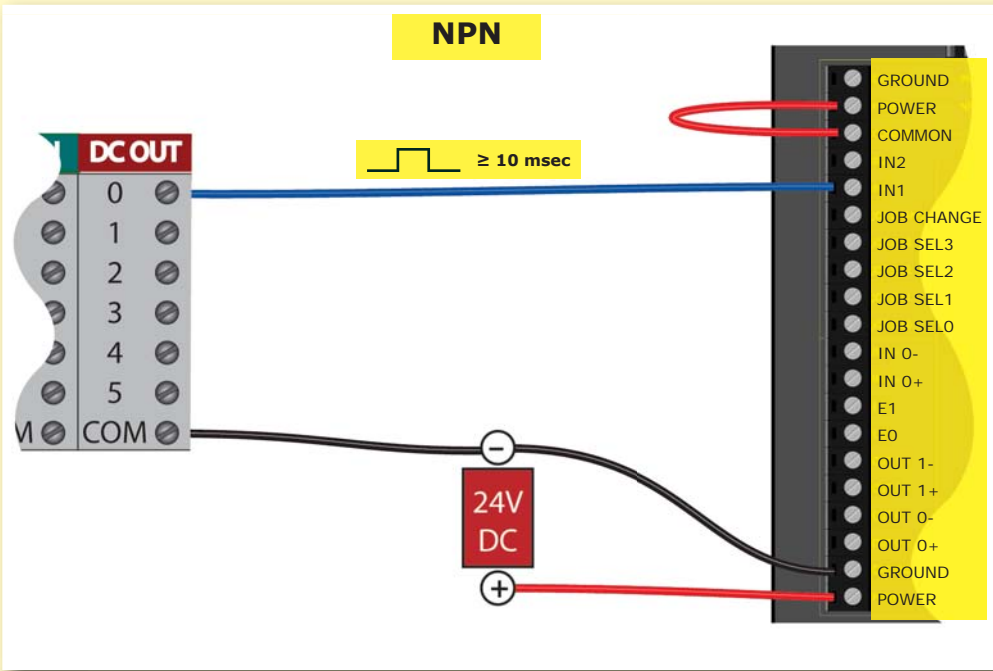
### PNP

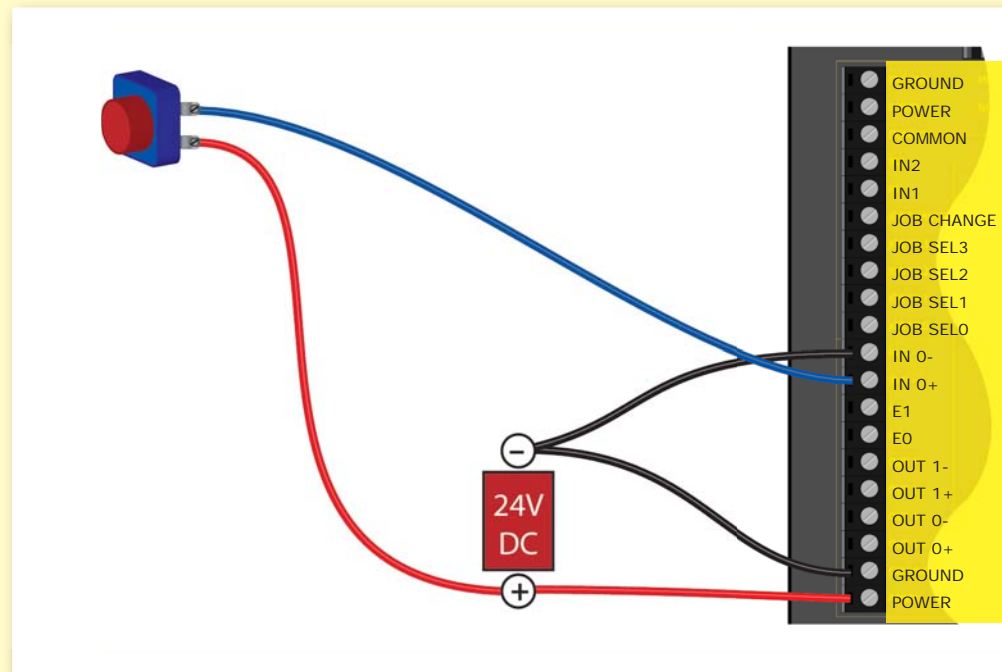
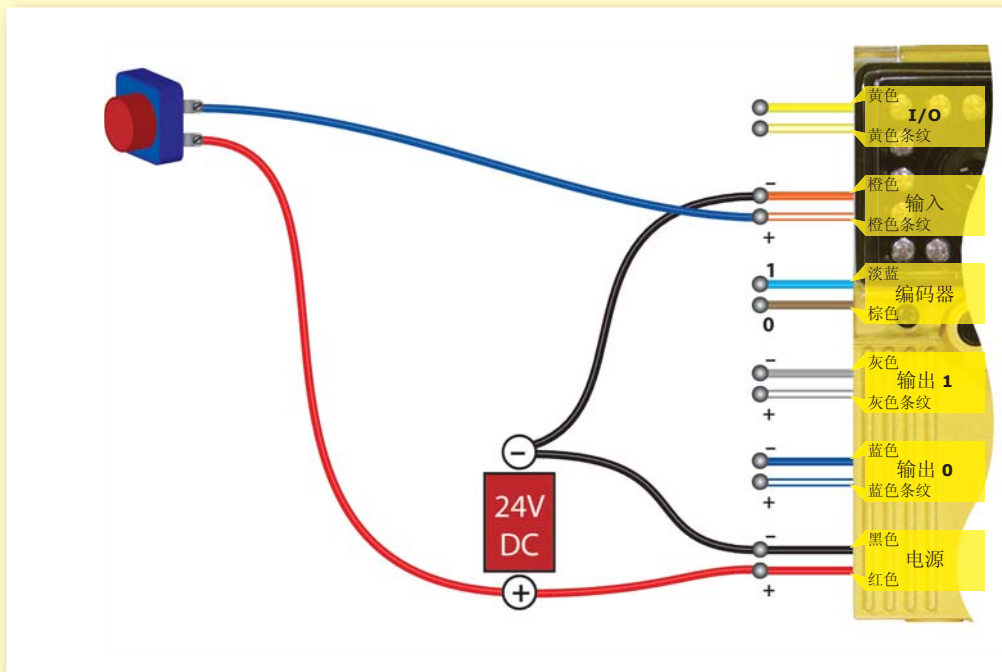


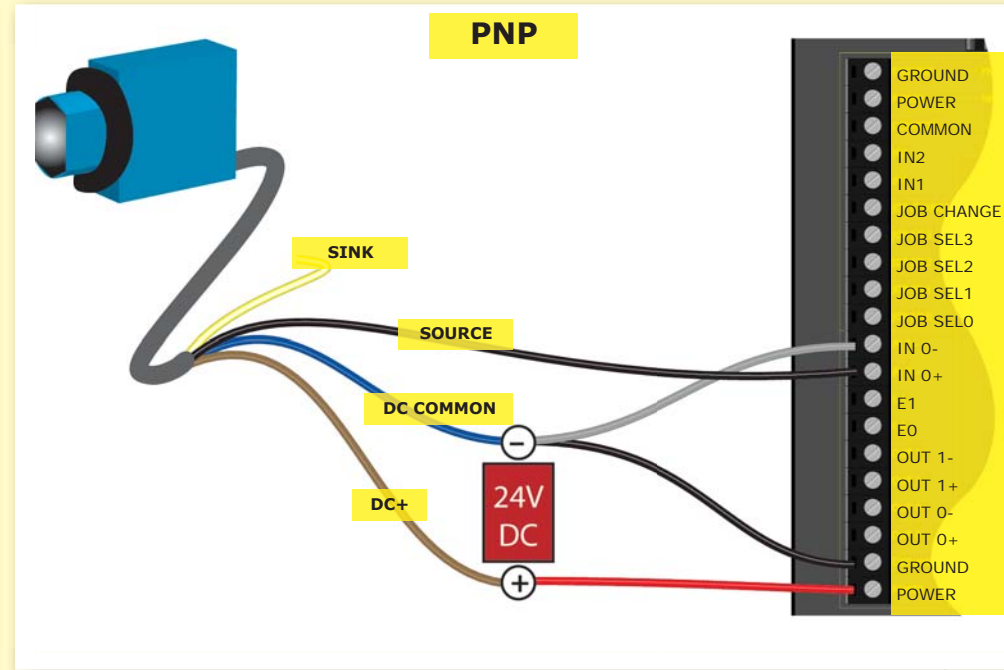
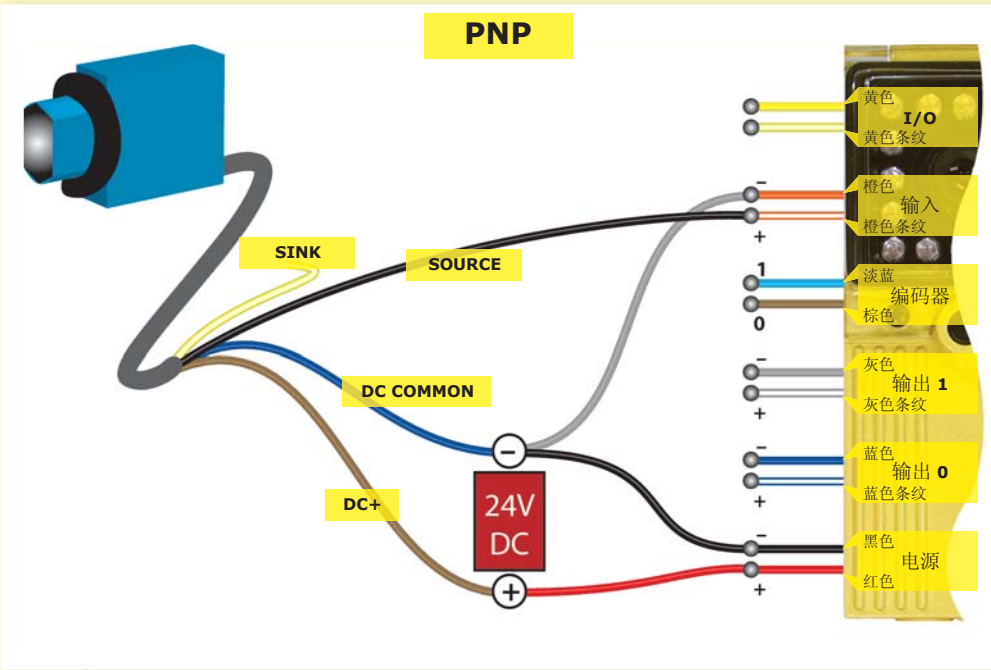
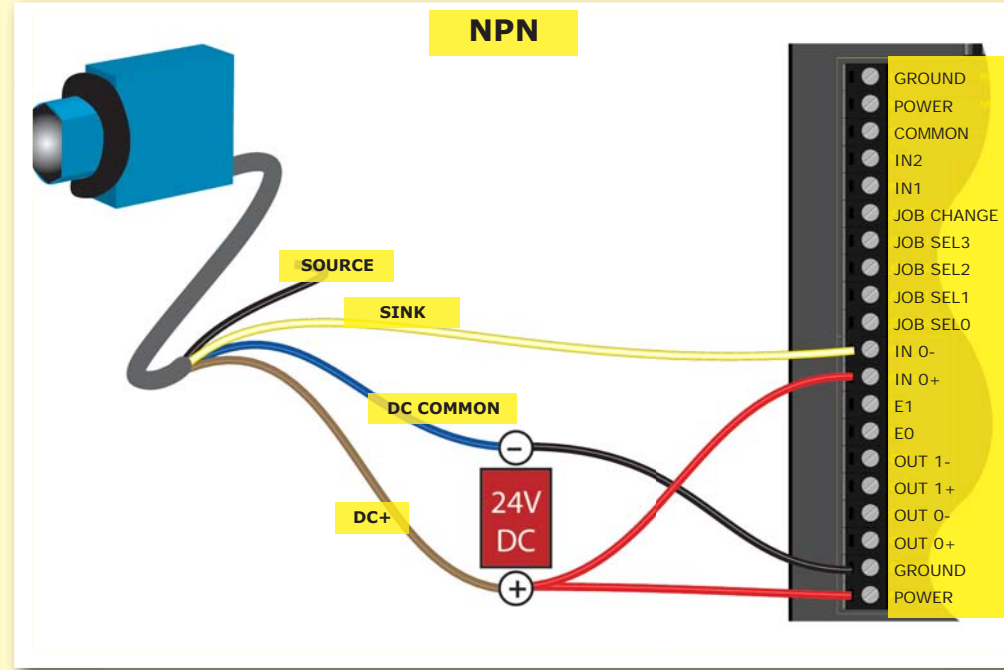
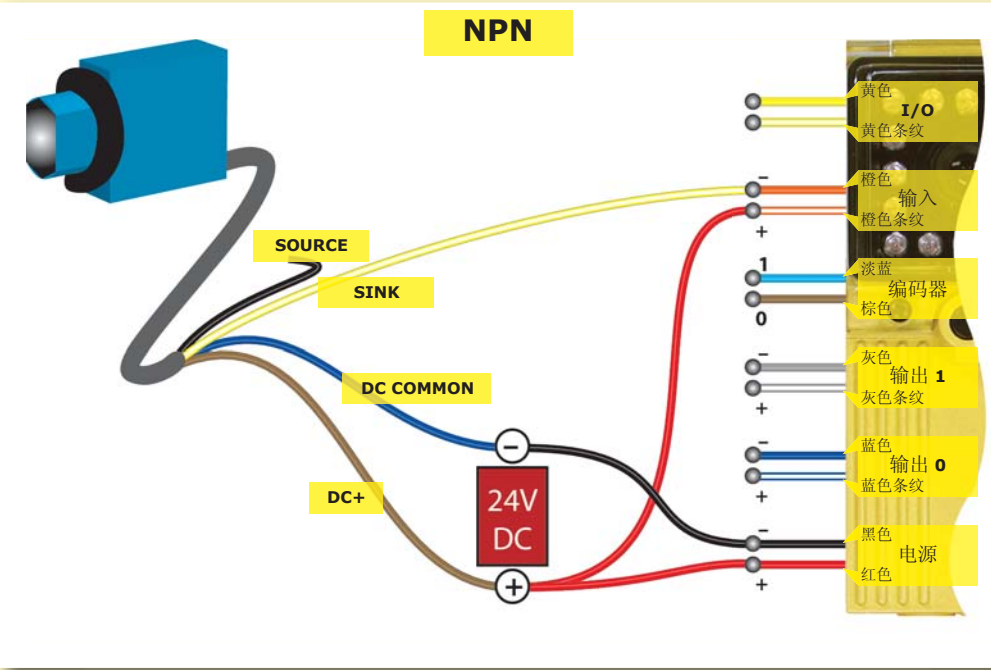


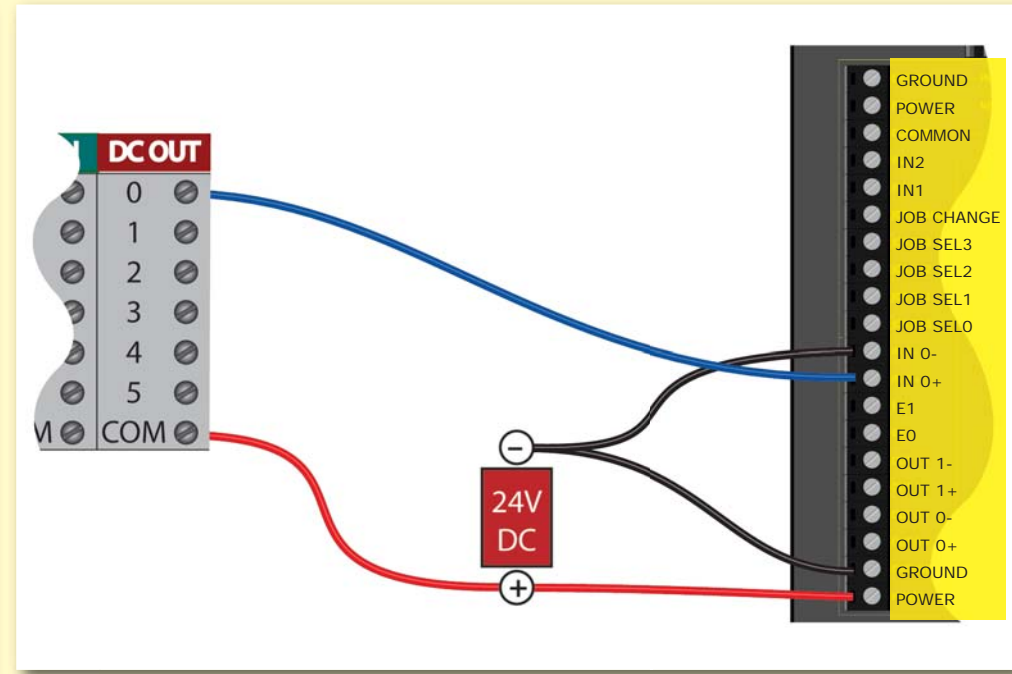
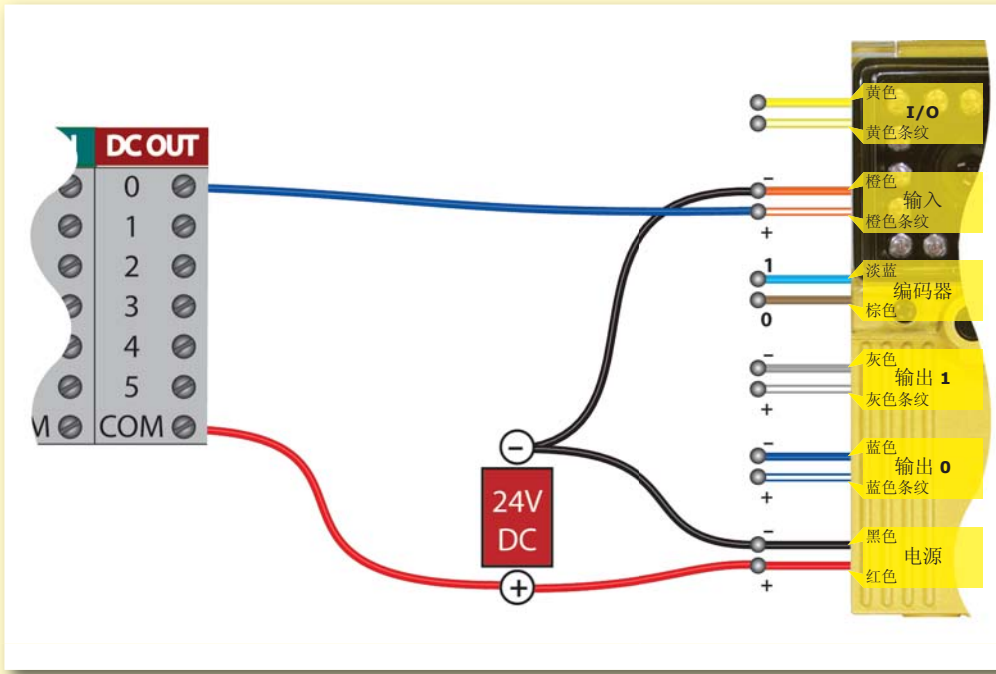












# 连接开路集电极编码器 (101E)

